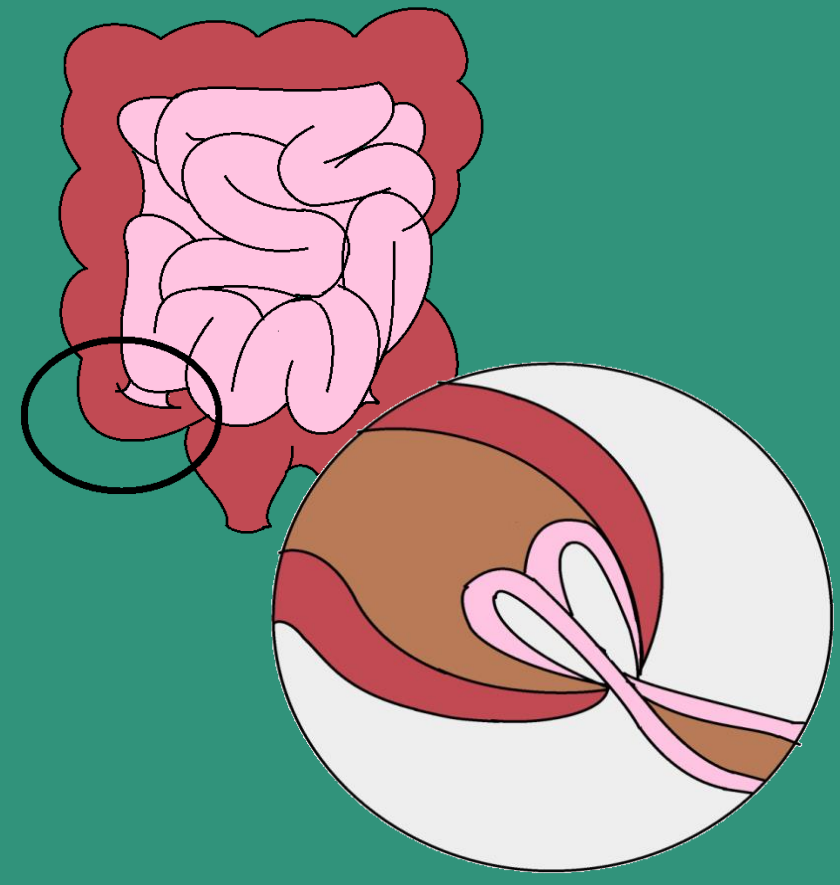


PROBLEM STATEMENT

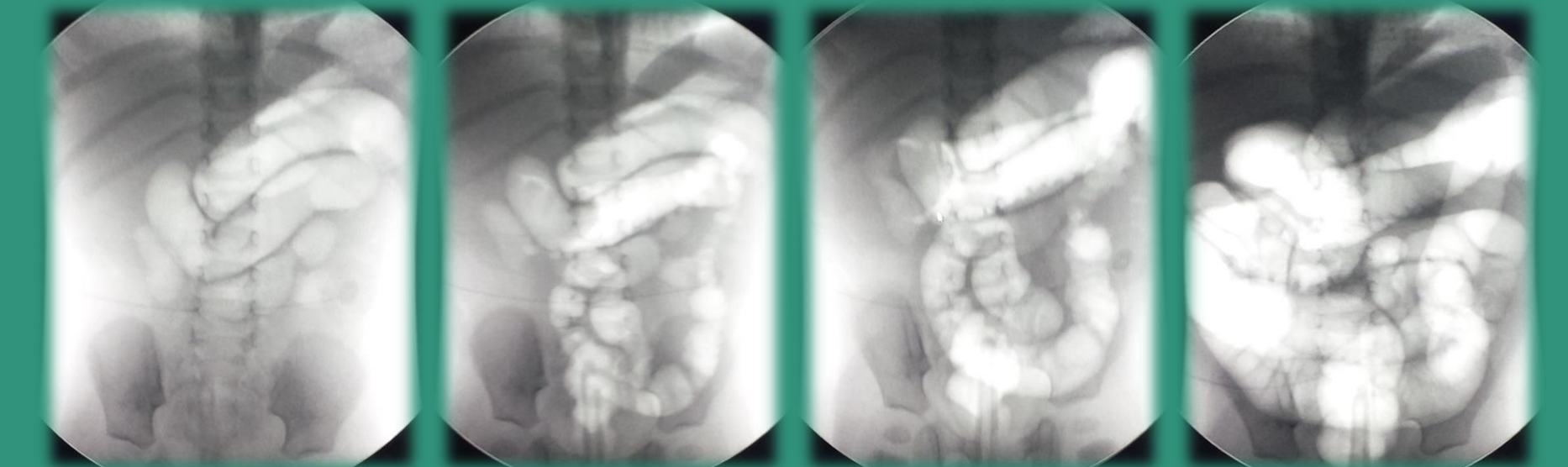


Intussusception: The telescoping of the bowel over itself that can lead to ischemia, tissue death, perforation, peritonitis and possibly death

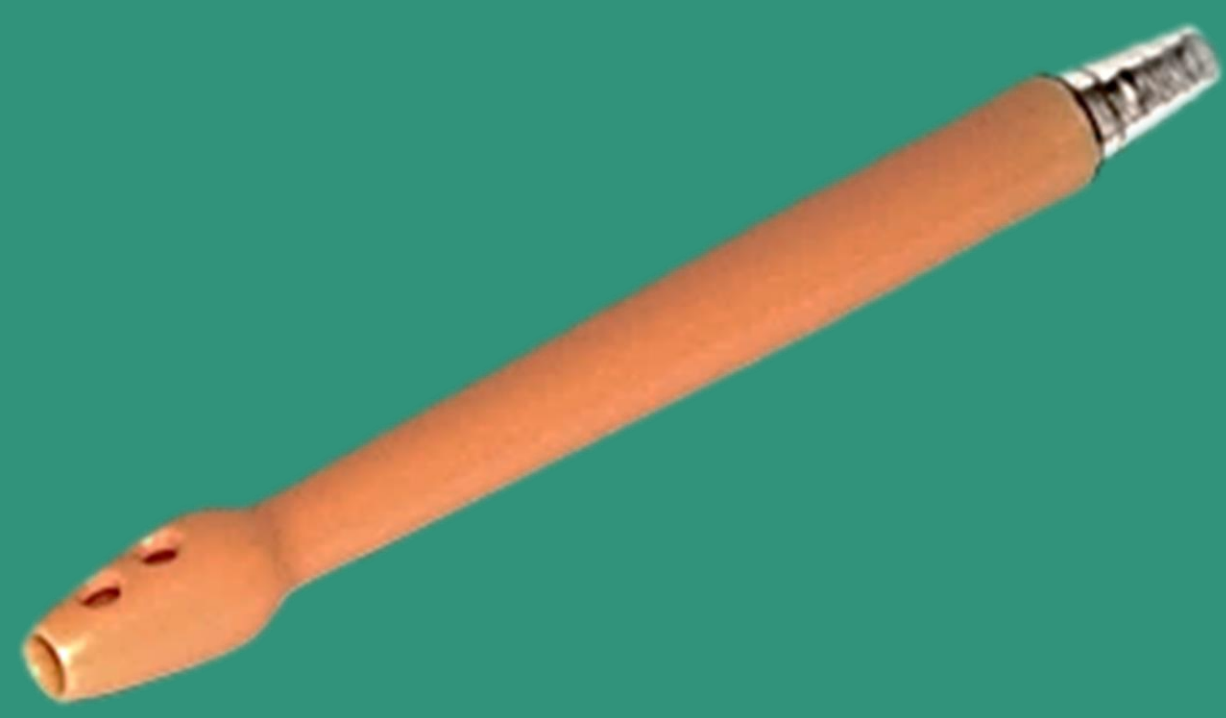
1 in every 2,000 infants in the US will suffer from this life threatening condition



Pneumatic reduction: The use of air to generate pressure & push out obstruction



CURRENT METHODS



ENEMA TIP



PLASTIC TUBING CONNECTOR



HAND PUMP

CHALLENGES

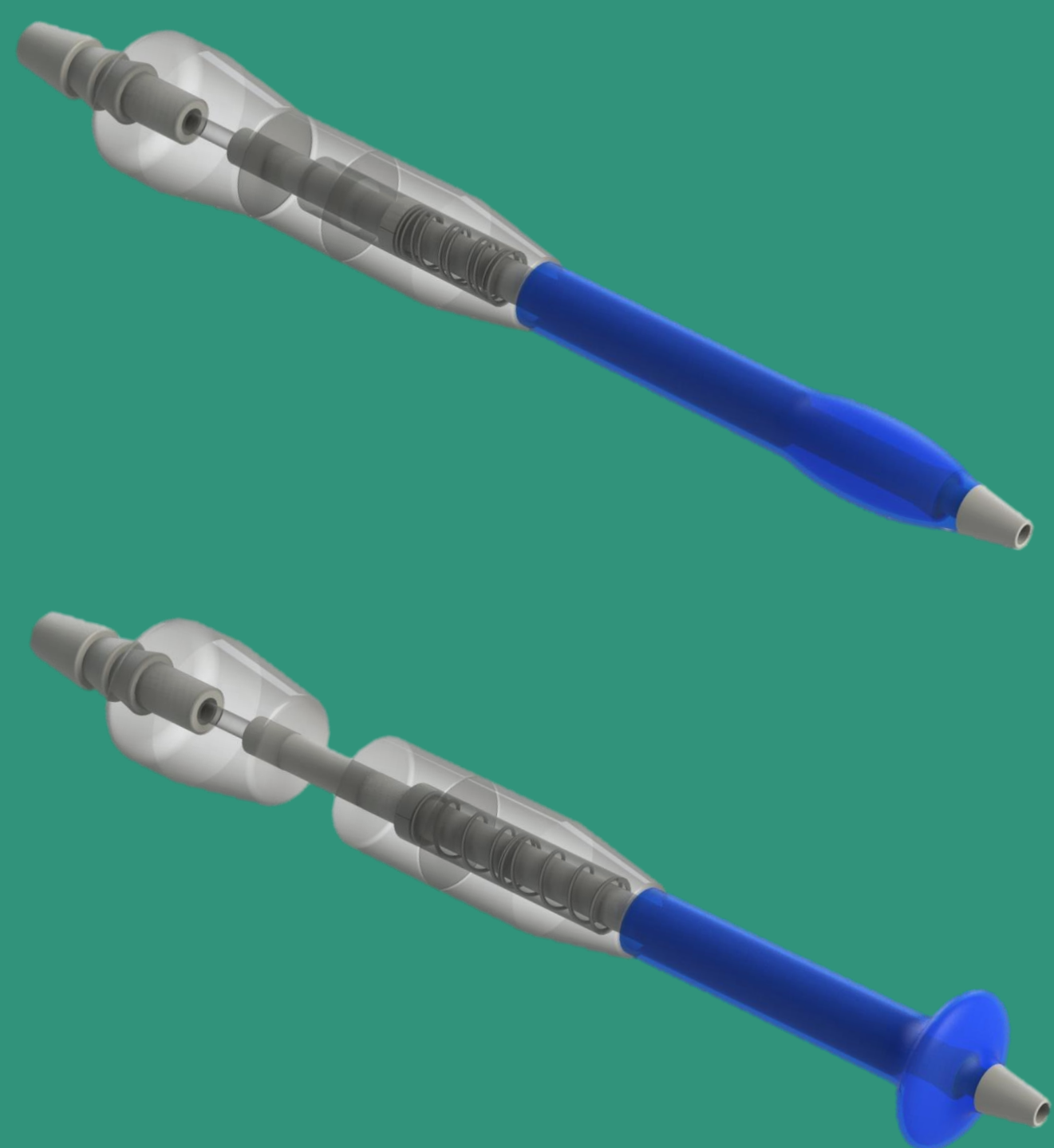
1. AIR LEAKAGE

2. FLUID BACKFLOW

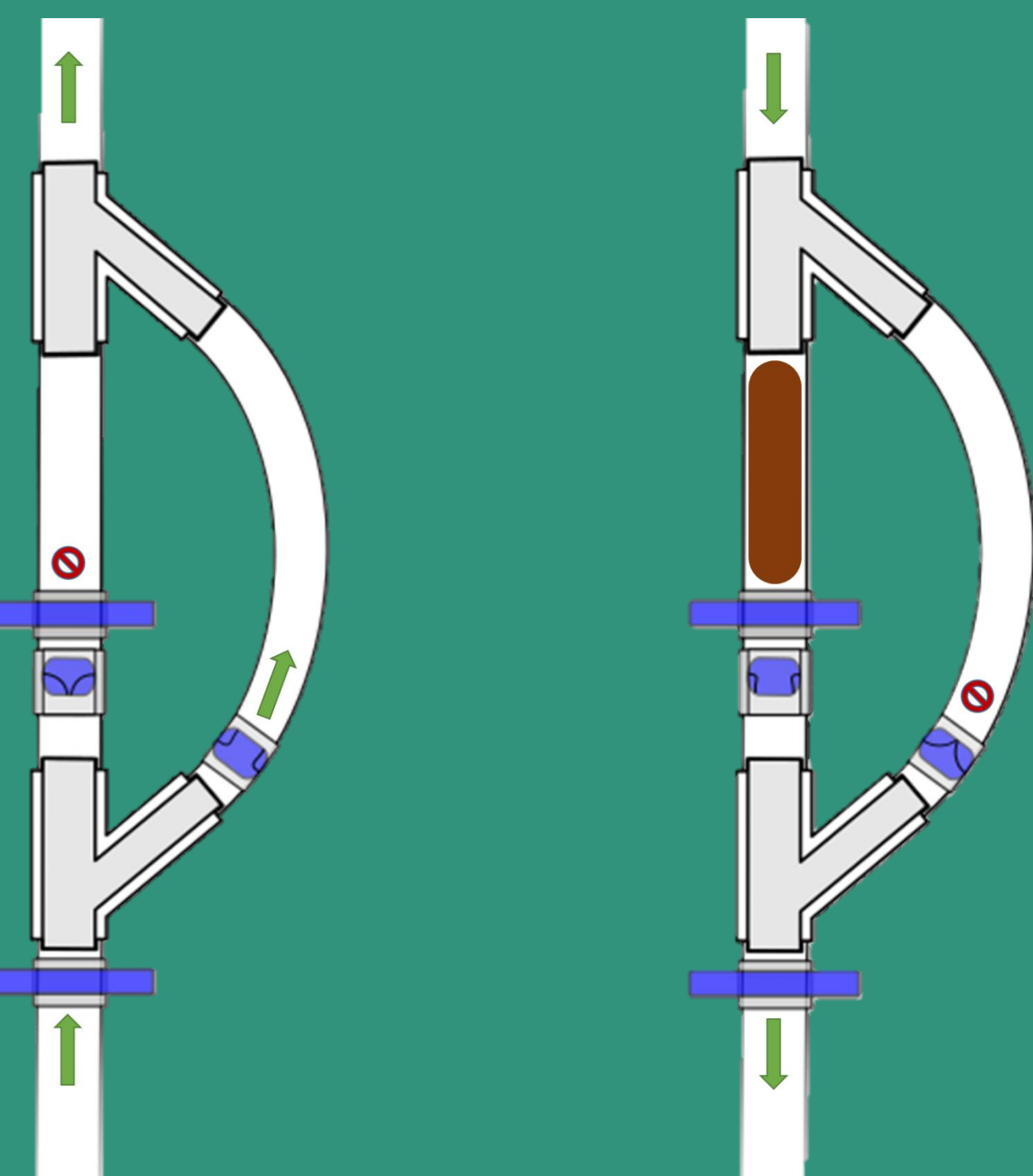
3. UNSTABLE PRESSURE

4. USER FATIGUE

OUR SOLUTIONS



1. IMPROVED ENEMA TIP



2. FECAL FILTRATION SYSTEM



3. AUTOMATED PRESSURE GENERATION UNIT



4. HANDHELD CONTROLLER